

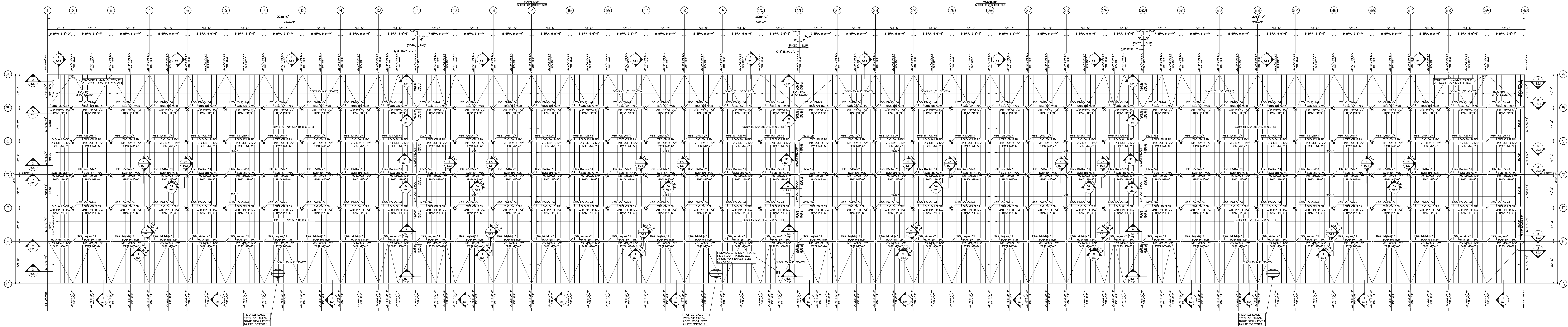
SUBMITTALS		
NO.	DATE	DESCRIPTION
1	2.1.2022	PROGRESS
2	2.28.2022	95% PROGRESS
3	6.8.2022	PERMIT
4	7.8.2022	FTG. STEPS
5	9.6.2022	AS NOTED
6	9.30.2022	100% BUILDING SET

PROJECT NO. AS286-21 | NY131 | 21-155A DTC

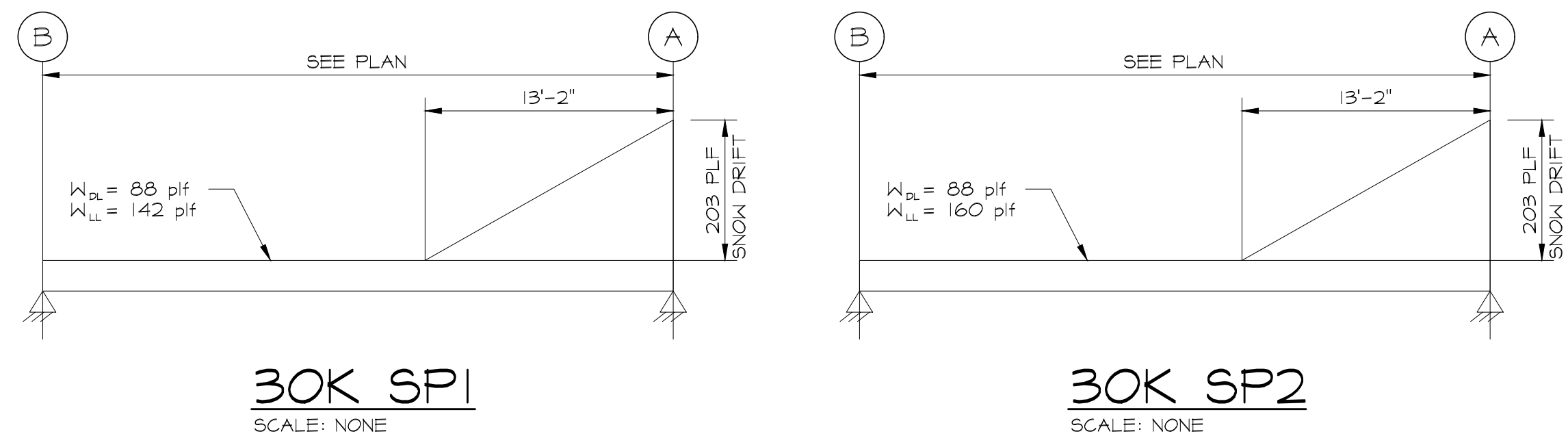
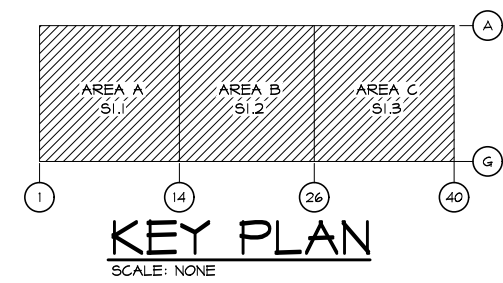
SHEET TITLE
**OVERALL ROOF
FRAMING PLAN**

SHEET NO.

S1.0



**OVERALL
ROOF FRAMING PLAN**
SCALE: NONE
NOTES:
1. JOIST BEARING (UB) ELEVATION PER PLAN.
2. INSTALL HORIZONTAL BRACING IN ACCORDANCE WITH S.U.I. SPECIFICATIONS.
3. COORDINATE BRACING LOCATIONS BY SPRINKLER SUPPLIER.
4. JOIST SUPPLIER SHALL DESIGN JOISTS FOR A NET UPLIFT AS INDICATED ON THE UPLIFT DIAGRAM ON SHEET S2.2. UPLIFT SHALL BE ADDED TO LOADS INDICATED ON PLAN.
5. SPRINKLER SUPPLIER AND JOIST SUPPLIER SHALL COORDINATE LOCATION OF SPRINKLER HEADS WITH HORIZONTAL BRACING LOCATIONS. PRIOR TO FABRICATION & ERECTION OF THE JOISTS.
6. DESIGN JOISTS NOTED THIS (+) FOR ADDITIONAL TOP CHORD COMPRESSIVE LATERAL FORCE (ALLOWABLE STRESSES MAY BE INCREASED AS PERMITTED BY BUILDING CODE (SERVICE LOADS) R = + AND AND S = SERVICE).
7. SEE DETAIL SHEET S2.2 FOR BRACE SIZES (DIAGONAL, 9 ZED).
8. —■— INDICATED LATERAL BRACING OF COLUMN PER DETAILS S4.1 & A / S2.1.



OVERALL PLAN FOR
REFERENCE ONLY.
USE SHEETS S1.1 TO S1.3
FOR WORKING DWGS